

Acta Crystallographica Section E

Structure Reports

Online

ISSN 1600-5368

(E)-3-(4-Chlorophenyl)-1-(1-naphthyl)-prop-2-en-1-one

 Grzegorz Dutkiewicz,^a S. Samshuddin,^b B. Narayana,^b
 H. S. Yathirajan^c and Maciej Kubicki^{a*}
^aDepartment of Chemistry, Adam Mickiewicz University, Grunwaldzka 6, 60-780 Poznań, Poland, ^bDepartment of Studies in Chemistry, Mangalore University, Mangalagangotri 574 199, India, and ^cDepartment of Studies in Chemistry, University of Mysore, Mysore 570 006, India
 Correspondence e-mail: mkubicki@amu.edu.pl

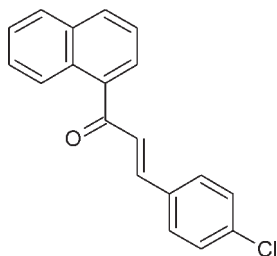
Received 13 November 2009; accepted 24 November 2009

 Key indicators: single-crystal X-ray study; $T = 295$ K; mean $\sigma(\text{C}-\text{C}) = 0.004$ Å; R factor = 0.035; wR factor = 0.083; data-to-parameter ratio = 9.8.

In the title compound, $\text{C}_{19}\text{H}_{13}\text{ClO}$, the benzene ring and the naphthalene system, are twisted by 12.3 (3) and 36.1 (2)°, respectively, and in opposite directions with respect to the central propenone bridge. The bond-angle pattern within the benzene ring is influenced by both substituents; these influences are almost additive. In the crystal, the molecules are linked by $\text{C}-\text{H}\cdots\text{O}$ and $\text{C}-\text{H}\cdots\text{Cl}$ interactions.

Related literature

For chalcones, see: Dhar (1981); Di Carlo *et al.* (1999); Dimmock *et al.* (1999); Goto *et al.* (1991); Indira *et al.* (2002); Sarojini *et al.* (2006); Satyanarayana *et al.* (2004); Uchida *et al.* (1998); Yarishkin (2008). For the 1-naphthyl analogue, see: Eswaramoorthy *et al.* (1994). For the influence of substituents on the geometry of the phenyl ring, see: Domenicano (1988). For a description of the Cambridge Crystallographic Database, see: Allen (2002).



Experimental

Crystal data

| | |
|--|----------------------------------|
| $\text{C}_{19}\text{H}_{13}\text{ClO}$ | $b = 8.0544$ (5) Å |
| $M_r = 292.74$ | $c = 7.8472$ (6) Å |
| Monoclinic, Pc | $\beta = 98.091$ (10)° |
| $a = 12.0392$ (14) Å | $V = 753.36$ (11) Å ³ |

$Z = 2$
 Mo $K\alpha$ radiation
 $\mu = 0.25$ mm⁻¹

$T = 295$ K
 $0.30 \times 0.20 \times 0.15$ mm

Data collection

Oxford Diffraction Xcalibur
 (Sapphire2, large Be window)
 diffractometer
 Absorption correction: multi-scan
 (*CrysAlis PRO*; Oxford)

Diffraction, 2009)
 $T_{\min} = 0.666$, $T_{\max} = 1.000$
 2481 measured reflections
 1866 independent reflections
 1440 reflections with $I > 2\sigma(I)$
 $R_{\text{int}} = 0.014$

Refinement

$R[F^2 > 2\sigma(F^2)] = 0.035$
 $wR(F^2) = 0.083$
 $S = 0.96$
 1866 reflections
 190 parameters
 2 restraints

H-atom parameters constrained
 $\Delta\rho_{\text{max}} = 0.12$ e Å⁻³
 $\Delta\rho_{\text{min}} = -0.13$ e Å⁻³
 Absolute structure: Flack (1983),
 423 Friedel pairs
 Flack parameter: 0.08 (7)

Table 1

Hydrogen-bond geometry (Å, °).

| $D-H\cdots A$ | $D-H$ | $H\cdots A$ | $D\cdots A$ | $D-H\cdots A$ |
|--|-------|-------------|-------------|---------------|
| $\text{C17}-\text{H17}\cdots\text{O12}^{\text{i}}$ | 0.93 | 2.42 | 3.180 (4) | 139 |
| $\text{C3}-\text{H3}\cdots\text{Cl21}^{\text{ii}}$ | 0.93 | 2.92 | 3.703 (3) | 143 |
| $\text{C8}-\text{H8}\cdots\text{O12}^{\text{iii}}$ | 0.93 | 2.64 | 3.546 (4) | 163 |

 Symmetry codes: (i) $x, y + 1, z$; (ii) $x - 1, -y + 2, z - \frac{1}{2}$; (iii) $x, -y, z - \frac{1}{2}$.

Data collection: *CrysAlis PRO* (Oxford Diffraction, 2009); cell refinement: *CrysAlis PRO*; data reduction: *CrysAlis PRO*; program(s) used to solve structure: *SIR92* (Altomare *et al.*, 1993); program(s) used to refine structure: *SHELXL97* (Sheldrick, 2008); molecular graphics: *Stereochemical Workstation Operation Manual* (Siemens, 1989); software used to prepare material for publication: *SHELXL97*.

SS thanks Mangalore University for the research facilities.

Supplementary data and figures for this paper are available from the IUCr electronic archives (Reference: FK2008).

References

- Allen, F. H. (2002). *Acta Cryst.* **B58**, 380–388.
 Altomare, A., Cascarano, G., Giacovazzo, C. & Guagliardi, A. (1993). *J. Appl. Cryst.* **26**, 343–350.
 Dhar, D. N. (1981). *The Chemistry of Chalcones and Related Compounds*. New York: John Wiley.
 Di Carlo, G., Mascolo, N., Izzo, A. A. & Capasso, F. (1999). *Life Sci.* **65**, 337–353.
 Dimmock, J. R., Elias, D. W., Beazely, M. A. & Kandepu, N. M. (1999). *Curr. Med. Chem.* **6**, 1125–1149.
 Domenicano, A. (1988). In *Stereochemical Applications of gas-phase electron diffraction*, edited by I. Hargittai & M. Hargittai, pp. 281–324. New York: VCH.
 Eswaramoorthy, S., Ponnuswamy, M. N., Raju, K. S., Nanjundan, S. & Krishnasamy, V. (1994). *Z. Kristallogr.* **209**, 669–672.
 Flack, H. D. (1983). *Acta Cryst.* **A39**, 876–881.
 Goto, Y., Hayashi, A., Kimura, Y. & Nakayama, M. (1991). *J. Cryst. Growth*, **108**, 688–698.
 Indira, J., Karat, P. P. & Sarojini, B. K. (2002). *J. Cryst. Growth*, **242**, 209–214.
 Oxford Diffraction (2009). *CrysAlis PRO*. Oxford Diffraction Ltd, Yarnton, Oxfordshire, England.
 Sarojini, B. K., Narayana, B., Ashalatha, B. V., Indira, J. & Lobo, K. G. (2006). *J. Cryst. Growth*, **295**, 54–59.

- Satyanarayana, M., Tiwari, P., Tripathi, B. K., Sriwastava, A. K. & Pratap, R. (2004). *Bioorg. Med. Chem.*, **12**, 883–889.
- Sheldrick, G. M. (2008). *Acta Cryst.* **A64**, 112–122.
- Siemens (1989). Stereochemical Workstation Operation Manual. Siemens Analytical X-ray Instruments Inc., Madison, Wisconsin, USA.
- Uchida, T., Kozawa, K., Sakai, T., Aoki, M., Yoguchi, H., Abduryim, A. & Watanabe, Y. (1998). *Mol. Cryst. Liq. Cryst.* **315**, 135–140.
- Yarishkin, O. V. (2008). *Bioorg. Med. Chem. Lett.* **18**, 137–140.

supporting information

Acta Cryst. (2009). E65, o3255–o3256 [doi:10.1107/S1600536809050508]

(E)-3-(4-Chlorophenyl)-1-(1-naphthyl)prop-2-en-1-one

Grzegorz Dutkiewicz, S. Samshuddin, B. Narayana, H. S. Yathirajan and Maciej Kubicki

S1. Comment

Chalcones constitute an important family of flavonoids. They have been reported to possess many interesting pharmacological activities (Dhar, 1981) including anti-inflammatory, antimicrobial, antifungal, antioxidant, cytotoxic, antitumor and anticancer activities (Dimmock *et al.*, 1999; Satyanarayana *et al.*, 2004). Some chalcones demonstrated the ability to block voltage-dependent potassium channels (Yarishkin *et al.*, 2008). Chalcones are also finding application as organic nonlinear optical materials (NLO) for their SHG conversion efficiency (Sarojini *et al.*, 2006). Chalcone derivatives are recognized material in the NLO applications because of their excellent blue light transmittance and good crystallization ability (Goto *et al.*, 1991; Uchida *et al.*, 1998; Indira *et al.*, 2002). Chemically chalcones consists of open-chain flavonoids in which the two aromatic rings are joined by α,β -unsaturated carbonyl system. The radical quenching properties of the phenolic groups present in many chalcones have raised interest in using these compounds or chalcone rich plant extracts as drugs or food preservatives (Di Carlo *et al.*, 1999). As a part of our efforts on the synthesis of naphthyl chalcones, this paper describes the crystal structure of a new naphthyl chalcone, (2E)-3-(4-Chlorophenyl)-1-(naphthalen-1-yl)prop-2-en-1-one (**I**, Scheme 1). There are 298 structures in the Cambridge Crystallographic Database (Allen, 2002: Ver. 5.30, Nov. 2008, last update Sep. 2009) that possess two aromatic moieties connected *via* CH=CH—CO— fragment, but only 10 of them are naphthyl chalcones, and the single one example with 1-naphthalene substituent (1-(1-Naphthalenyl)-3-(4-nitrophenyl)-2-propenone, Eswaramoorthy *et al.*, 1994). It might be noted, that this structure apparently has errors: one of the torsion angles in the aromatic ring is as large as 5°.

The molecule of **I** is built of three approximately planar fragments (Fig. 1): the phenyl ring (A, maximum deviation from the least-squares plane is 0.006 (3) Å), propenone fragment C=C—C=O (B, 0.014 (2) Å), and the naphthalene ring system (C). This last fragment however is significantly folded, even though both individual rings are almost planar, the dihedral angle between these planes is as high as 5.05 (13)°. The overall conformation of **I** can be described in terms of dihedral angles between these fragments: A/B 36.1 (2)°, B/C 12.3 (3)°, and A/C 25.51 (9)°. These values show that the terminal planes are twisted in opposite sense with respect to the central bridging fragment. This situation is relatively rare, the majority of chalcones found in the CDB shows the same sense of rotation with respect to the central bridge.

The bond lengths within the conjugated linear fragment suggest the large degree of localization: C—C bond length of 1.480 (4) Å, C=C of 1.329 (4) Å and C=O 1.232 (3) Å. The bond angles within the phenyl ring are influenced by both Cl and C=C— substituents, and these influences are almost additive, as suggested *e.g.*, by Domenicano (1988). The distribution is almost symmetrical with respect to the C15···C18 line, and the values are close to those calculated by summing the effects of both substituents.

In the crystal structure there is one relatively short C—H···O potential hydrogen bond, C17—H17···O12(*x*, 1 + *y*, *z*), that link molecules into infinite chains along *y* direction, and few weak C—H···O and C—H··· π contacts, which can stabilize the packing otherwise determined by the van der Waals interactions and close packing requirements (Fig. 2).

S2. Experimental

To a mixture of 1-acetonaphthone (1.7 g, 0.01 mol) and *p*-chlorobenzaldehyde (1.4 g, 0.01 mol) in 30 ml ethanol, 10 ml of 10% sodium hydroxide solution was added and stirred at 5–10 °C for 3 h. The precipitate formed was collected by filtration and purified by recrystallization from ethanol. The single-crystal was grown from DMF by slow evaporation method and yield of the compound was 82%. (m.p. 360–362 K). Analytical data: Found (Calculated): C %: 76.89 (77.95); H %: 4.23 (4.48).

S3. Refinement

Hydrogen atoms were located geometrically and refined as a riding model; their U_{iso} values were set at 1.2 times U_{eq} of their carrier carbon atom.

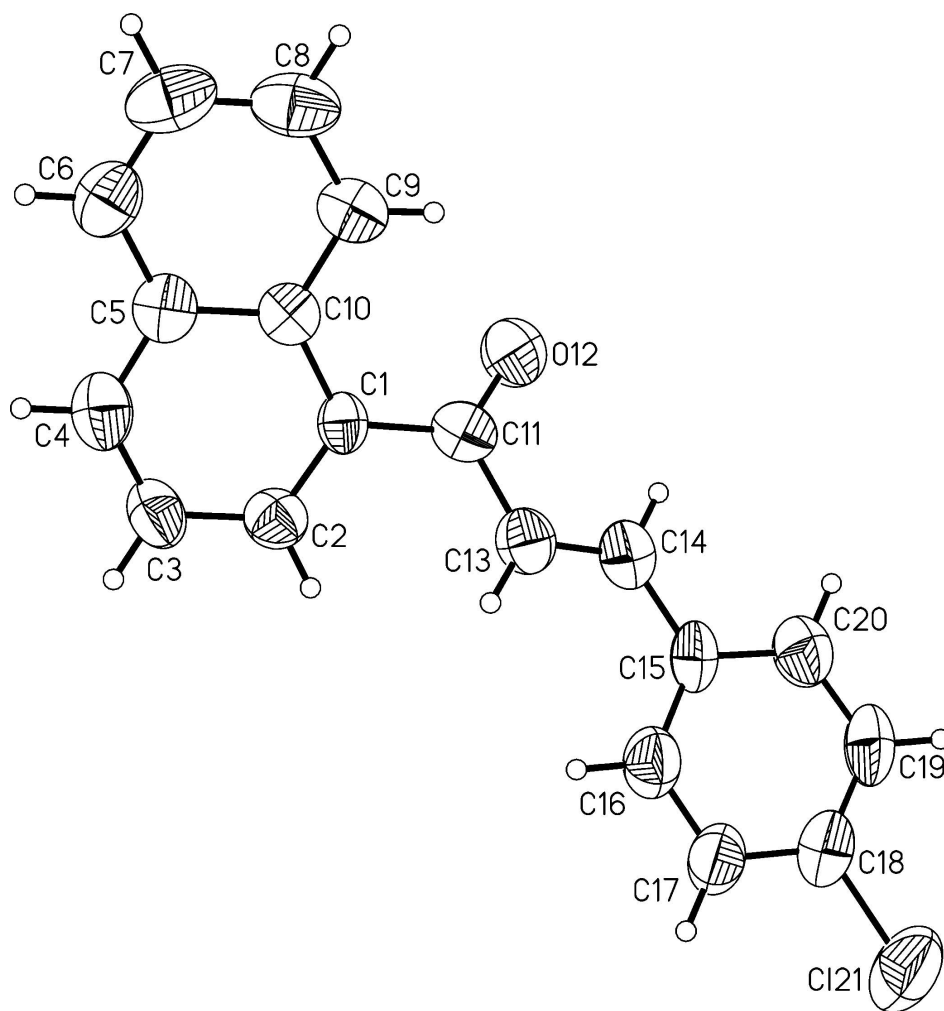
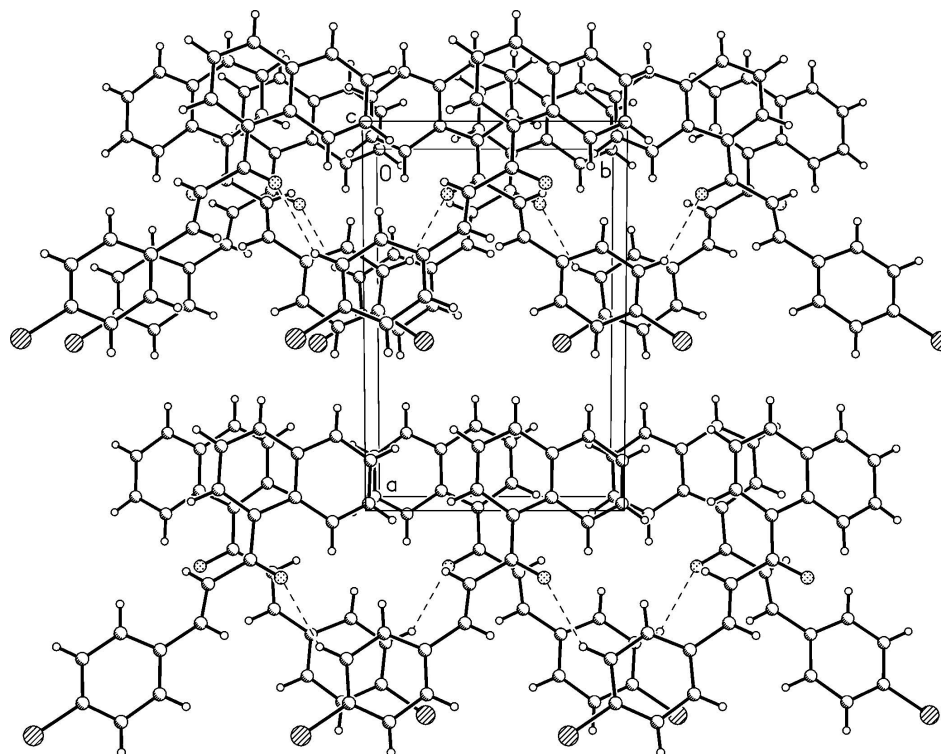
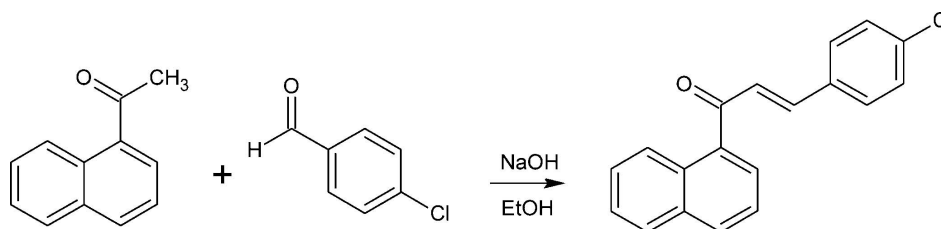


Figure 1

Anisotropic ellipsoid representation of the compound **I** together with atom labelling scheme. The ellipsoids are drawn at 50% probability level, hydrogen atoms are depicted as spheres with arbitrary radii.

**Figure 2**

The crystal packing of **I** as seen along *z* direction; weak C—H...O bonds are shown as dashed lines.

**Figure 3**

The formation of the title compound.

(*E*)-3-(4-Chlorophenyl)-1-(1-naphthyl)prop-2-en-1-one

Crystal data

$C_{19}H_{13}ClO$

$M_r = 292.74$

Monoclinic, *Pc*

Hall symbol: *P* -2*yc*

$a = 12.0392$ (14) Å

$b = 8.0544$ (5) Å

$c = 7.8472$ (6) Å

$\beta = 98.091$ (10)°

$V = 753.36$ (11) Å³

$Z = 2$

$F(000) = 304$

$D_x = 1.291$ Mg m⁻³

Mo *K* α radiation, $\lambda = 0.71073$ Å

Cell parameters from 1288 reflections

$\theta = 2.5$ – 26.6 °

$\mu = 0.25$ mm⁻¹

$T = 295$ K

Block, colourless

$0.30 \times 0.20 \times 0.15$ mm

Data collection

Oxford Diffraction Xcalibur (Sapphire2, large Be window) diffractometer
 Radiation source: Enhance (Mo) X-ray Source
 Graphite monochromator
 Detector resolution: 8.1929 pixels mm⁻¹
 ω scan
 Absorption correction: multi-scan (CrysAlis PRO; Oxford Diffraction, 2009)

$T_{\min} = 0.667$, $T_{\max} = 1.000$
 2481 measured reflections
 1866 independent reflections
 1440 reflections with $I > 2\sigma(I)$
 $R_{\text{int}} = 0.014$
 $\theta_{\max} = 26.6^\circ$, $\theta_{\min} = 2.5^\circ$
 $h = -14 \rightarrow 11$
 $k = -9 \rightarrow 4$
 $l = -9 \rightarrow 6$

Refinement

Refinement on F^2
 Least-squares matrix: full
 $R[F^2 > 2\sigma(F^2)] = 0.035$
 $wR(F^2) = 0.083$
 $S = 0.96$
 1866 reflections
 190 parameters
 2 restraints
 Primary atom site location: structure-invariant direct methods
 Secondary atom site location: difference Fourier map

Hydrogen site location: inferred from neighbouring sites
 H-atom parameters constrained
 $w = 1/[\sigma^2(F_o^2) + (0.050P)^2]$
 where $P = (F_o^2 + 2F_c^2)/3$
 $(\Delta/\sigma)_{\max} = 0.001$
 $\Delta\rho_{\max} = 0.12 \text{ e } \text{\AA}^{-3}$
 $\Delta\rho_{\min} = -0.13 \text{ e } \text{\AA}^{-3}$
 Absolute structure: Flack (1983), 423 Friedel pairs
 Absolute structure parameter: 0.08 (7)

Special details

Geometry. All e.s.d.'s (except the e.s.d. in the dihedral angle between two l.s. planes) are estimated using the full covariance matrix. The cell e.s.d.'s are taken into account individually in the estimation of e.s.d.'s in distances, angles and torsion angles; correlations between e.s.d.'s in cell parameters are only used when they are defined by crystal symmetry. An approximate (isotropic) treatment of cell e.s.d.'s is used for estimating e.s.d.'s involving l.s. planes.

Refinement. Refinement of F^2 against ALL reflections. The weighted R -factor wR and goodness of fit S are based on F^2 , conventional R -factors R are based on F , with F set to zero for negative F^2 . The threshold expression of $F^2 > \sigma(F^2)$ is used only for calculating R -factors(gt) *etc.* and is not relevant to the choice of reflections for refinement. R -factors based on F^2 are statistically about twice as large as those based on F , and R -factors based on ALL data will be even larger.

Fractional atomic coordinates and isotropic or equivalent isotropic displacement parameters (\AA^2)

| | x | y | z | $U_{\text{iso}}^*/U_{\text{eq}}$ |
|----|-------------|-------------|------------|----------------------------------|
| C1 | 0.0117 (2) | 0.4299 (3) | 0.5052 (3) | 0.0451 (6) |
| C2 | -0.0556 (2) | 0.5690 (3) | 0.4967 (3) | 0.0543 (7) |
| H2 | -0.0256 | 0.6681 | 0.5435 | 0.065* |
| C3 | -0.1681 (2) | 0.5651 (4) | 0.4195 (4) | 0.0618 (7) |
| H3 | -0.2119 | 0.6605 | 0.4154 | 0.074* |
| C4 | -0.2124 (2) | 0.4207 (4) | 0.3508 (4) | 0.0617 (7) |
| H4 | -0.2879 | 0.4175 | 0.3048 | 0.074* |
| C5 | -0.1473 (2) | 0.2754 (3) | 0.3471 (3) | 0.0521 (6) |
| C6 | -0.1908 (2) | 0.1292 (4) | 0.2642 (4) | 0.0657 (7) |
| H6 | -0.2661 | 0.1256 | 0.2173 | 0.079* |
| C7 | -0.1260 (3) | -0.0057 (4) | 0.2513 (4) | 0.0753 (9) |
| H7 | -0.1567 | -0.1010 | 0.1967 | 0.090* |
| C8 | -0.0125 (3) | -0.0015 (4) | 0.3204 (4) | 0.0697 (8) |
| H8 | 0.0325 | -0.0934 | 0.3084 | 0.084* |

| | | | | |
|------|--------------|--------------|--------------|------------|
| C9 | 0.0335 (2) | 0.1362 (3) | 0.4058 (4) | 0.0563 (7) |
| H9 | 0.1088 | 0.1355 | 0.4528 | 0.068* |
| C10 | -0.0321 (2) | 0.2793 (3) | 0.4233 (3) | 0.0469 (6) |
| C11 | 0.1246 (2) | 0.4368 (3) | 0.6114 (3) | 0.0526 (6) |
| O12 | 0.16532 (16) | 0.3125 (2) | 0.6876 (3) | 0.0740 (6) |
| C13 | 0.1853 (2) | 0.5973 (3) | 0.6331 (3) | 0.0562 (7) |
| H13 | 0.1563 | 0.6890 | 0.5698 | 0.067* |
| C14 | 0.2804 (2) | 0.6132 (3) | 0.7411 (4) | 0.0581 (7) |
| H14 | 0.3076 | 0.5175 | 0.7989 | 0.070* |
| C15 | 0.3469 (2) | 0.7639 (4) | 0.7790 (4) | 0.0543 (7) |
| C16 | 0.3072 (2) | 0.9202 (3) | 0.7270 (4) | 0.0637 (8) |
| H16 | 0.2357 | 0.9297 | 0.6651 | 0.076* |
| C17 | 0.3705 (2) | 1.0620 (4) | 0.7642 (4) | 0.0682 (9) |
| H17 | 0.3421 | 1.1656 | 0.7282 | 0.082* |
| C18 | 0.4770 (2) | 1.0472 (4) | 0.8560 (4) | 0.0674 (9) |
| C19 | 0.5195 (2) | 0.8945 (4) | 0.9109 (4) | 0.0711 (8) |
| H19 | 0.5912 | 0.8856 | 0.9723 | 0.085* |
| C20 | 0.4540 (2) | 0.7544 (4) | 0.8731 (4) | 0.0674 (8) |
| H20 | 0.4821 | 0.6514 | 0.9115 | 0.081* |
| Cl21 | 0.55687 (8) | 1.22525 (11) | 0.90310 (13) | 0.1042 (4) |

Atomic displacement parameters (Å²)

| | U^{11} | U^{22} | U^{33} | U^{12} | U^{13} | U^{23} |
|------|-------------|-------------|-------------|--------------|--------------|--------------|
| C1 | 0.0455 (14) | 0.0522 (15) | 0.0381 (14) | 0.0023 (11) | 0.0074 (11) | 0.0011 (12) |
| C2 | 0.0602 (17) | 0.0538 (15) | 0.0500 (16) | 0.0043 (12) | 0.0113 (13) | -0.0061 (13) |
| C3 | 0.0541 (17) | 0.0693 (18) | 0.0619 (18) | 0.0165 (13) | 0.0081 (14) | -0.0018 (16) |
| C4 | 0.0477 (15) | 0.085 (2) | 0.0521 (16) | 0.0047 (14) | 0.0058 (12) | 0.0001 (16) |
| C5 | 0.0527 (15) | 0.0656 (17) | 0.0384 (15) | -0.0037 (13) | 0.0074 (12) | 0.0013 (14) |
| C6 | 0.0662 (18) | 0.077 (2) | 0.0528 (17) | -0.0111 (17) | 0.0052 (14) | -0.0025 (17) |
| C7 | 0.102 (3) | 0.066 (2) | 0.057 (2) | -0.0178 (18) | 0.0114 (18) | -0.0110 (16) |
| C8 | 0.104 (3) | 0.0555 (17) | 0.0522 (17) | 0.0068 (16) | 0.0217 (17) | -0.0032 (15) |
| C9 | 0.0653 (18) | 0.0581 (15) | 0.0469 (16) | 0.0059 (13) | 0.0126 (13) | 0.0024 (14) |
| C10 | 0.0550 (16) | 0.0516 (14) | 0.0364 (14) | 0.0008 (12) | 0.0144 (12) | 0.0049 (12) |
| C11 | 0.0533 (16) | 0.0559 (16) | 0.0491 (16) | 0.0055 (12) | 0.0090 (12) | 0.0026 (13) |
| O12 | 0.0674 (13) | 0.0677 (12) | 0.0812 (15) | 0.0034 (10) | -0.0100 (11) | 0.0117 (12) |
| C13 | 0.0557 (17) | 0.0613 (16) | 0.0510 (16) | 0.0029 (12) | 0.0059 (14) | 0.0043 (13) |
| C14 | 0.0491 (15) | 0.0708 (17) | 0.0544 (17) | 0.0051 (13) | 0.0071 (13) | 0.0069 (15) |
| C15 | 0.0413 (15) | 0.073 (2) | 0.0478 (16) | -0.0009 (13) | 0.0049 (12) | 0.0011 (13) |
| C16 | 0.0448 (16) | 0.079 (2) | 0.065 (2) | -0.0034 (14) | -0.0015 (13) | 0.0077 (16) |
| C17 | 0.0483 (17) | 0.077 (2) | 0.078 (2) | -0.0085 (13) | 0.0042 (15) | 0.0113 (16) |
| C18 | 0.0488 (18) | 0.089 (2) | 0.065 (2) | -0.0120 (15) | 0.0101 (15) | -0.0020 (17) |
| C19 | 0.0420 (16) | 0.096 (2) | 0.073 (2) | 0.0000 (15) | -0.0023 (14) | -0.0061 (19) |
| C20 | 0.0532 (17) | 0.080 (2) | 0.066 (2) | 0.0088 (14) | -0.0019 (14) | 0.0034 (16) |
| Cl21 | 0.0772 (5) | 0.1122 (7) | 0.1174 (8) | -0.0353 (5) | -0.0068 (5) | -0.0004 (6) |

Geometric parameters (Å, °)

| | | | |
|------------|-----------|--------------|-----------|
| C1—C2 | 1.379 (3) | C9—H9 | 0.9300 |
| C1—C10 | 1.438 (3) | C11—O12 | 1.232 (3) |
| C1—C11 | 1.491 (3) | C11—C13 | 1.483 (4) |
| C2—C3 | 1.404 (4) | C13—C14 | 1.331 (3) |
| C2—H2 | 0.9300 | C13—H13 | 0.9300 |
| C3—C4 | 1.359 (4) | C14—C15 | 1.462 (4) |
| C3—H3 | 0.9300 | C14—H14 | 0.9300 |
| C4—C5 | 1.410 (4) | C15—C16 | 1.387 (4) |
| C4—H4 | 0.9300 | C15—C20 | 1.395 (4) |
| C5—C6 | 1.410 (4) | C16—C17 | 1.382 (4) |
| C5—C10 | 1.431 (3) | C16—H16 | 0.9300 |
| C6—C7 | 1.350 (4) | C17—C18 | 1.385 (4) |
| C6—H6 | 0.9300 | C17—H17 | 0.9300 |
| C7—C8 | 1.398 (4) | C18—C19 | 1.378 (4) |
| C7—H7 | 0.9300 | C18—C121 | 1.737 (3) |
| C8—C9 | 1.371 (4) | C19—C20 | 1.385 (4) |
| C8—H8 | 0.9300 | C19—H19 | 0.9300 |
| C9—C10 | 1.415 (3) | C20—H20 | 0.9300 |
| | | | |
| C2—C1—C10 | 119.2 (2) | C5—C10—C1 | 118.6 (2) |
| C2—C1—C11 | 118.7 (2) | O12—C11—C13 | 119.8 (3) |
| C10—C1—C11 | 122.0 (2) | O12—C11—C1 | 120.6 (2) |
| C1—C2—C3 | 121.9 (3) | C13—C11—C1 | 119.5 (2) |
| C1—C2—H2 | 119.1 | C14—C13—C11 | 121.5 (3) |
| C3—C2—H2 | 119.1 | C14—C13—H13 | 119.2 |
| C4—C3—C2 | 119.4 (3) | C11—C13—H13 | 119.2 |
| C4—C3—H3 | 120.3 | C13—C14—C15 | 127.3 (3) |
| C2—C3—H3 | 120.3 | C13—C14—H14 | 116.3 |
| C3—C4—C5 | 122.0 (2) | C15—C14—H14 | 116.3 |
| C3—C4—H4 | 119.0 | C16—C15—C20 | 117.4 (3) |
| C5—C4—H4 | 119.0 | C16—C15—C14 | 122.5 (2) |
| C4—C5—C6 | 122.1 (2) | C20—C15—C14 | 120.1 (3) |
| C4—C5—C10 | 118.8 (2) | C17—C16—C15 | 122.1 (3) |
| C6—C5—C10 | 119.1 (2) | C17—C16—H16 | 119.0 |
| C7—C6—C5 | 121.7 (3) | C15—C16—H16 | 119.0 |
| C7—C6—H6 | 119.1 | C16—C17—C18 | 118.8 (3) |
| C5—C6—H6 | 119.1 | C16—C17—H17 | 120.6 |
| C6—C7—C8 | 119.7 (3) | C18—C17—H17 | 120.6 |
| C6—C7—H7 | 120.1 | C19—C18—C17 | 121.0 (3) |
| C8—C7—H7 | 120.1 | C19—C18—C121 | 120.0 (2) |
| C9—C8—C7 | 121.0 (3) | C17—C18—C121 | 118.9 (3) |
| C9—C8—H8 | 119.5 | C18—C19—C20 | 119.0 (3) |
| C7—C8—H8 | 119.5 | C18—C19—H19 | 120.5 |
| C8—C9—C10 | 120.9 (3) | C20—C19—H19 | 120.5 |
| C8—C9—H9 | 119.5 | C19—C20—C15 | 121.6 (3) |
| C10—C9—H9 | 119.5 | C19—C20—H20 | 119.2 |

| | | | |
|---------------|------------|------------------|------------|
| C9—C10—C5 | 117.6 (2) | C15—C20—H20 | 119.2 |
| C9—C10—C1 | 123.7 (2) | | |
| C10—C1—C2—C3 | 4.0 (4) | C11—C1—C10—C5 | 170.1 (2) |
| C11—C1—C2—C3 | -171.1 (2) | C2—C1—C11—O12 | 146.6 (3) |
| C1—C2—C3—C4 | -0.1 (4) | C10—C1—C11—O12 | -28.3 (4) |
| C2—C3—C4—C5 | -3.1 (4) | C2—C1—C11—C13 | -29.9 (3) |
| C3—C4—C5—C6 | -175.0 (3) | C10—C1—C11—C13 | 155.1 (2) |
| C3—C4—C5—C10 | 2.1 (4) | O12—C11—C13—C14 | -3.9 (4) |
| C4—C5—C6—C7 | 175.5 (3) | C1—C11—C13—C14 | 172.7 (2) |
| C10—C5—C6—C7 | -1.6 (4) | C11—C13—C14—C15 | -178.0 (3) |
| C5—C6—C7—C8 | -0.4 (4) | C13—C14—C15—C16 | 11.7 (4) |
| C6—C7—C8—C9 | 1.9 (4) | C13—C14—C15—C20 | -169.2 (3) |
| C7—C8—C9—C10 | -1.3 (4) | C20—C15—C16—C17 | 0.6 (4) |
| C8—C9—C10—C5 | -0.7 (3) | C14—C15—C16—C17 | 179.7 (3) |
| C8—C9—C10—C1 | -177.5 (2) | C15—C16—C17—C18 | 0.2 (4) |
| C4—C5—C10—C9 | -175.1 (2) | C16—C17—C18—C19 | -0.4 (4) |
| C6—C5—C10—C9 | 2.1 (3) | C16—C17—C18—C121 | -180.0 (2) |
| C4—C5—C10—C1 | 1.9 (3) | C17—C18—C19—C20 | -0.1 (4) |
| C6—C5—C10—C1 | 179.1 (2) | C121—C18—C19—C20 | 179.4 (2) |
| C2—C1—C10—C9 | 171.9 (2) | C18—C19—C20—C15 | 0.9 (4) |
| C11—C1—C10—C9 | -13.2 (4) | C16—C15—C20—C19 | -1.2 (4) |
| C2—C1—C10—C5 | -4.8 (3) | C14—C15—C20—C19 | 179.7 (3) |

Hydrogen-bond geometry (Å, °)

| <i>D</i> —H... <i>A</i> | <i>D</i> —H | H... <i>A</i> | <i>D</i> ... <i>A</i> | <i>D</i> —H... <i>A</i> |
|----------------------------|-------------|---------------|-----------------------|-------------------------|
| C17—H17...O12 ⁱ | 0.93 | 2.42 | 3.180 (4) | 139 |
| C3—H3...Cl21 ⁱⁱ | 0.93 | 2.92 | 3.703 (3) | 143 |
| C8—H8...O12 ⁱⁱⁱ | 0.93 | 2.64 | 3.546 (4) | 163 |

Symmetry codes: (i) *x*, *y*+1, *z*; (ii) *x*-1, -*y*+2, *z*-1/2; (iii) *x*, -*y*, *z*-1/2.